

An abstract painting serves as the background, featuring broad, expressive brushstrokes in shades of blue and teal. A prominent vertical stripe of bright cyan runs down the right side, while a sliver of deep red is visible at the far right edge. The overall texture is painterly and layered.

TRAVERS SMITH

CSR Art Programme 2016-17



Our CSR Programme supports charities, local communities and not-for-profit-organisations, as well as improving access to justice by broadening the range of people who can access our legal skills. Our three key objectives in this area are as follows:

Working with local communities

We work with our local communities, developing meaningful ties with schools, universities, youth projects and community groups, and using our influence to help give people better opportunities to access the legal profession.

Pro bono - access to justice

We undertake a range of pro bono initiatives designed to give individuals and organisations, both at home and abroad, the opportunity to access levels of legal advice that would not normally be obtainable for them.

Charities programme

Our partnership provides substantial financial support to a major charity partner over a two year period. Our current partner is The Single Homeless Project, a central London charity working to prevent homelessness and help vulnerable and socially excluded people to transform their lives.

The Travers Smith Foundation also enables us to support even more charities, local communities, and not-for-profit-organisations by issuing small grants and donations.

The Travers Smith Art Programme, and our relationship with the University of Westminster and the Royal College of Art, is an important part of our CSR objective to engage, support and nurture our local communities. As well as showcasing and facilitating the sales of students' work, we will also be providing pro bono advice and training to assist with the transition from student life to professional practice.

Travers Smith Art Programme 2016-17

**IN PARTNERSHIP WITH THE UNIVERSITY OF WESTMINSTER
AND THE ROYAL COLLEGE OF ART**

Contents

06	Artwork
61	Purchasing Work
62	The Art Committee
64	Student Artists
68	Final Words

Foreword

A very warm welcome to the second year of the Travers Smith CSR Art Programme, in partnership with the University of Westminster and the Royal College of Art.

The Art Programme is at the heart of our Corporate Social Responsibility work and underlines our CSR commitment from the moment someone steps into our offices.

We are extremely proud of the achievements of the first year of the Programme, and are excited to launch the next phase. This year's collection contains a brand new element: work from postgraduates from the Royal College of Art, in addition to pieces from University of Westminster undergraduates. We are delighted not only to expand our collection, but also to be able to support a larger and more diverse group of students.

Recognising that the transition from student life to professional practice can often be a particular challenge for art students, we are also enhancing the support which the Programme offers to

nurture the emerging talent of those involved. This will include training with our intellectual property and commercial contract lawyers, workshops on business skills and pro bono legal advice relevant to being a professional artist.

Another new development this year is that the Art Programme now has a dedicated space showcasing artwork which reflects two significant elements of our broader CSR work: supporting refugees and asylum seekers and promoting greater LGBT inclusion.

Together with all the partners and staff here at Travers Smith, I look forward to welcoming you to our offices to see the Art Programme at first hand. I hope you will enjoy the diverse and exciting artworks on display.



Daniel Gerring
CSR PARTNER



Sunyoung Hwang

DIM

**ACRYLIC AND OIL ON CANVAS
220 X 240CM**

My work is based around the ideas of interior world; constantly attempting to reach the “unseen” such as hidden presence and invisible fullness. In this sense, I see my work as a place in which the invisible can be seen, the intangible can be touched and the silence can be heard.

Location: Snow Hill ground floor reception

Guide price: £5,000

Royal College of Art, MA Painting

Augustine Carr

EXPLORING SPACE

ARCHIVAL DIGITAL C-TYPE PRINT ON HAHNEMUHLE PEARL RAG PAPER
WITH WELDED ALUMINIUM FRAME
110 X 80CM

I paint on books informed by my research into medieval marginalia. While thinking about how to situate and present the work, I became interested in archiving them. I built a pinhole camera using a scanner and a blacked out box. I like the way that the enlargement directs our attention to the detail but there is no object to encounter, only a gesture and an idea.

*Location: 5th floor reception corridor
Guide price (framed): £3,150 (edition of 3)*

Royal College of Art, MA Painting





Mary Woolf

THE YORKSHIRE DALES

DIGITAL PHOTOGRAPHIC PRINTS MOUNTED ON ALUMINIUM
87 X 59CM (EACH)

My practice explores perception in all its forms. *The Yorkshire Dales* is an exploration into the perception of colour and the ontology of photography. A photograph is a representation of light, and therefore colour, captured by any photo-sensitive surface. This information can be outputted in any manner and still be a photograph.

Location: M1

Guide price: £330 each (edition of 5 + 1 artist proof)

University of Westminster, BA Photography

Grace Flynn

OMNIA SERIES I - III

**INKJET
59 X 84CM (EACH)**

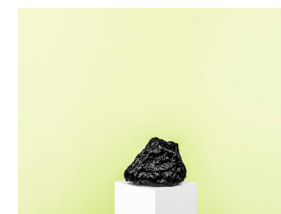
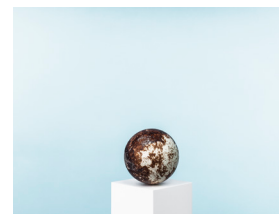
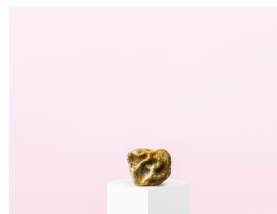
The aim of this work is to explore the power of photography to transcend the limits of human perception and thus bring us closer to a state of pure receptivity. By taking objects that are associated with a particular use/value and placing them in a different context,

Omnia creates visions out of that which does not typically arrest the gaze.

Location: M2 & M4

Guide price: £400 each, £1,000 for set of three

University of Westminster, BA Photography





Liz Benjamin

GREY 6 TO 1

**ARCHIVAL FINE ART PRINTS ON DIBOND
47 X 61CM (EACH)**

GREY was inspired by my love for dogs, especially greyhounds. Taken from my photobook of the same name, the photographs of the trap numbers form an abridged version of the book. *GREY* explores the conflict between nostalgia and welfare, with the photographs inhabiting the space between the polarised stances of the racing industry and those who wish to see it banned.

Location: M3

Guide price: One set of 6 prints, unframed/unmounted: £1,100

One set of 6 mounted on dibond and ready to be installed: £1,400

(edition of 5 + 1 artist proof)

University of Westminster, BA Photography

Nico Virides

THE SILENCE OF THE CITY, ASLEEP AT NIGHT
UNTITLED #1 - #4

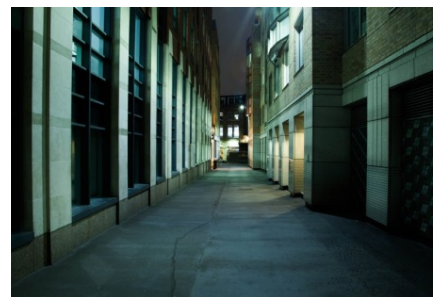
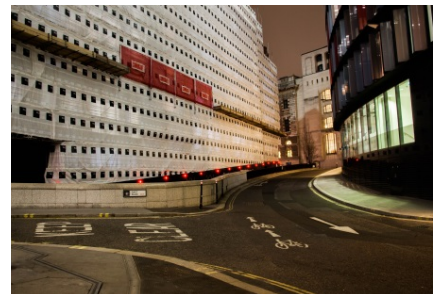
DIGITAL INKJET PRINTS MOUNTED ON ALUMINIUM WITH SPLIT BATONS
40 X 60CM (EACH)

My photography has generally been concerned with exploring the city that I have always lived in - London. For this work, I took to the streets in the city of London to photograph it at night. The purpose was to explore how the powerhouse of our economy functions at night, which it seemingly does not in these images.

Location: M5

Guide price: £400 each

University of Westminster, BA Photography





Solina Guédroitz

ARTISTS CHAIRS
INKJET MOUNTED ON DIBOND
26 X 20CM (EACH)

Artists Chairs derives from a fascination with the creative mind and the making of art. The seemingly banal chairs living in artists' studios have stories to tell; the traces they bear are witness to their owners' accomplishments. These images have been taken with a large-format camera on transparency film.

Location: M6

Guide price: £350 each (edition of 3 + 1 artist proof)

University of Westminster, BA Photography

Olga Grotova

UNTITLED
SCREEN PRINT INK ON CANVAS
150 X 110CM

I look at ways that people use authenticity to collude or misinform, undermining authentic gestures and narrative structures with elements of untruth. My paintings represent genuine abstract gestures as repeated fictions. *Untitled* (2016) reimagines a painterly mark as a repeated print, which still retains its expressive energy.

Location: M7
Guide price: £2,800

Royal College of Art, MA Painting





Katie Christian

BREATH
OIL ON CANVAS
60 X 80CM

My oil paintings are an experimentation of vulnerability. Using the theories behind psychoanalysis, inspired by Darian Leader, I aim to make the viewer feel watched and judged by something that they cannot see. I removed all indication of location and era, such as objects, to force the viewer to question their traditionally realistic place in a conceptually driven time.

Location: M8
Guide price: £500

University of Westminster, BA Mixed Media Fine Art

Sang-Mi Rha

A LEAP OF FAITH

OIL, ACRYLIC AND MONOPRINT ON LINEN
95 X 180CM

Following the deaths of family members, my work departs from the complexities surrounding the notion of forgetting. With an interest in the emotional effects of oblivion, nostalgia and wish-fulfilment, there is a sense of liberation from the inhibitions that once disabled life, lost upon detachment from an object once desired. An individual pursuit for a re-beginning within the ethereal world of *A Leap of Faith* becomes that of a shared experience.

Location: M9

Guide price: Not for sale

Royal College of Art, MA Painting





Elsie Kibue-Ngare

WOMEN IN SPORTS
C-TYPE PRINTS ON FOAMEX
61 X 40.5CM (EACH)

Women in Sports is a representation of women from all walks of life engaging in sports on-and-off their respective fields, the challenges they face and how they have overcome them.

As a photographer who primarily focuses on documentary, portraiture and sports, this project is also an ongoing reflection on how some of those challenges affect me personally and professionally as a mother and as a photographer.

Location: M10

Guide price: £250 each (edition of 5)

University of Westminster, BA Photography

Soo Min Ahn

SPACES

OIL ON CANVAS
120 X 180CM

I am interested in the expression of empty space through my works. My space does not only exist in real space but also has a place in mental and psychological space. My works present abstract space that can be ambiguous. I am fascinated by silent and tranquil moments in space but it is often very short, quickly changing or disappearing completely.

Location: M11

Guide price: £2,500

Royal College of Art, MA Painting





Nathan Baumber

THE GREEK
OIL AND ACRYLIC ON CANVAS
100 X 100CM

I start my paintings by applying a layer of flat colour. I see this as setting the stage on which the rest of the painting unfolds. The colour is chosen to shape the mood of the painting; it can be used to add gravity or levity to the chosen subject matter, allowing it space or suffocating it. The rest of the painting begins with a narrative in mind. During the painting process more narratives or fragments of different stories are added to create a final image, which often has an intended surreal element to it.

Location: M12

Guide price: £600

University of Westminster, BA Mixed Media Fine Art

Katie Christian

ALLOWABLE
OIL ON CANVAS
90 X 150CM

HEADACHE
OIL ON CANVAS
90 X 150CM

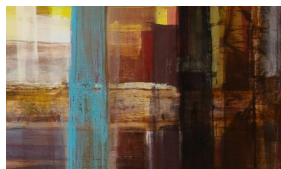
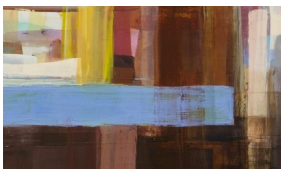
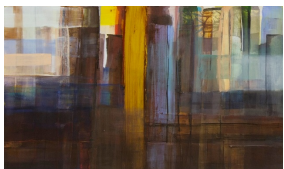
My oil paintings are an experimentation of vulnerability. Using the theories behind psychoanalysis, inspired by Darian Leader, I aim to make the viewer feel watched and judged by something that they cannot see. I removed all indication of location and era, such as objects, to force the viewer to question their traditionally realistic place in a conceptually driven time.

Location: M14 & M15

Guide price: £800 each

University of Westminster, BA Mixed Media Fine Art





Luanna Flammia

NOSTALGIC I - III

VARNISH, ACRYLIC, OIL, ENAMEL, INK & GOLD FOIL ON CANVAS
90 X 150CM (EACH)

I create abstract paintings which reference landscape and have a nostalgic presence. As a child, I spent a lot of time in a small village in Italy where I was surrounded by old, crumbled buildings. I use a Mediterranean palette to reference the warm, terracotta colours and the reflections from the sun. I go through various paint processes, such as layering in vertical and horizontal strokes.

Location: M16

Guide price: £1,400 for series of three or £500 each

University of Westminster, BA Mixed Media Fine Art

Harry Martin

ZKRYs
OIL ON CANVAS
160 X 160CM

My paintings combine images which have a particular emotional resonance for me. Drawing inspiration from eastern mysticism, esotericism and the natural world, I use painting as a form of catharsis to expel negativity. I collage contradictory perspectives to create a sense of unease or falling into the image.

Location: 5th floor reception corridor

Guide price: £400

University of Westminster, BA Mixed Media Fine Art





Georgia Harris

I AM PHIBIAN (II - VII)
HAND COLOURED ETCHINGS
51 X 38CM

“Realism is the art of depicting nature as it is seen by toads.”
– The Devils Dictionary

The toad is my amphibian avatar for traversing ambiguous imagery.
An easily identifiable specimen, seemingly suspended in space.

Location: Dining room corridor

Guide price:

Framed: £320 each

Unframed £250 each (edition of 10)

Royal College of Art, MA Print

Bethany Hill

COMING FULL CIRCLE
FULL FRAME DIGITAL PHOTOGRAPH
50 X 74CM (EACH)

This project explores the lives of a variety of LGBT+ people in my home county of Cumbria.

Since moving to London, I have been introduced to many different cultures, religious beliefs, class, gender and sexual identities. Even though I did come out when I finished school, I felt liberated to explore my own sexual and gender identities in London, which I may not have done if I had never left home. Through my own contacts and the power of social media, I photographed a diverse group of people and gathered statements, giving a small insight to what it is to be LGBT and Cumbrian- this is just the beginning.

Location: Dining room corridor

Guide price:

Framed: £950 for the set

Unframed: £600 for the set (edition of 5)

University of Westminster, BA Photography



FEATURED PIECE IN THE TRAVERS SMITH CSR SHOWCASE



Tom Hatton

I - III FROM “NOW HERE” SERIES

SILVER GELATIN PRINT
122 X 165CM (EACH)

These photographs are from a body of work made in the Calais Refugee Camp from January - March 2016. Rather than show the refugees directly, we are instead shown the spaces in-and-around the camp. As we scan the image surfaces, we gather a more informed idea of the conditions of the place. The photographic spaces invite the viewer to bear witness.

Location: Dining room corridor

Guide price:

Framed: £3,450

Unframed: £2,750 (edition of 5 + artist proof)

Royal College of Art, MA Photography

FEATURED PIECE IN THE TRAVERS SMITH CSR SHOWCASE

Insun Jang

AS THE WATERS COVER THE SEA

OIL ON CANVAS
180 X 100CM

HEAVEN

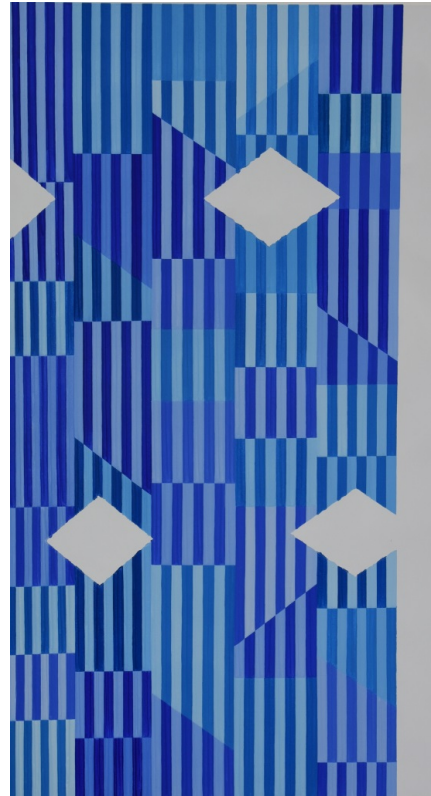
OIL ON CANVAS
180 X 100CM

My work is about the seeing, perception and presence of nature and light through the structure of line and space. At the beginning, my work starts as memory of the communal space such as playground and runway through the signal and sign. That inspires me to create visible structure which people can perceive according to individual memory. It is naturally related to nature and light of life.

Location: Auditorium reception

Guide price: £2,500 each

Royal College of Art, MA Painting





Louis Flothman

FLAG

SILK SCREENPRINT ON CANVAS
150 X 300CM

In my practice, I am concerned with the mass-produced and thrown-away. I focus on social and political issues, found in print media, responding to contemporary life. In a globalised world, *Flag* reflects the current crisis of our national identity and cultural heritage in a rapidly changing Europe.

Location: Auditorium anteroom

Guide price: £500

University of Westminster, BA Mixed Media Fine Art

Paula Baader

PARK LANDSCAPE
ACRYLIC ON CANVAS
150 X 220CM

I aim to create personal maps with thousands of tiny details, visible as scribbles, spots and blots. The outcome of what I perceive every day is transformed into bird's eye perspective.

Location: Auditorium

Guide price: £4,600

Royal College of Art, MA Painting





Paula Baader

SQUARE MILE
ACRYLIC ON CANVAS
167.5 X 152.5CM

I aim to create personal maps with thousands of tiny details, visible as scribbles, spots and blots. The outcome of what I perceive every day is transformed into bird's eye perspective.

Location: Auditorium

Guide price: £4,000

Royal College of Art, MA Painting

Julia Parkinson

POOL 2
OIL ON ALUMINIUM
100 X 200CM

My work explores material properties while making an interpretation on landscape. The changing state of the surface of the work echoes the changing states of landmass when viewed from an aerial perspective. Form is found by referencing the earth's surface and the effects that come upon it through either natural or man-made forces.

Location: Auditorium

Guide price: £5,000

Royal College of Art, MA Sculpture





Hatice Atas

CUBOID

**6MM METAL RODS
220 X 80CM (HEIGHT INCLUDING PLINTH)**

My work explores subjects that lie on the borders of geometry and philosophy, combining fragility and movement. Using metal as a main focus of my practice, I create sculptures that outline structural figures; exploring the shape and form as well as the space.

Location: Snow Hill, ground floor reception

Guide price: £1,300

University of Westminster, BA Mixed Media Fine Art

Kyle Zeto

MACHO PROMETHEAN CREATOR MYTH FALLACY
IN METAL, ALUMINIUM & STEEL
70 X 70CM

Science and mysticism are commonly seen as separate. The mathematical relations to our universe are abstract until applied by physical reaction. But the principles of mathematics are invoked to create order out of chaos - as if human nature cannot bear to imagine a world without patterns to recognise.

Location: 5th floor reception

Guide price: Not for sale

Royal College of Art, MA Photography





Jake Garfield

JAKE THE FEMINIST

BRONZE

25 X 25 X 10CM

The bronze *Jake The Feminist* was made as a response to the idea of the “mask of masculinity”. Beards have become increasingly trendy as a man’s role in society has become less masculine. I wanted to create a mask of my beard (it is cast directly from my own face using alginate) to stand in for myself at my RCA degree show. With the eyes cut off, the face is passive (it is looked at but cannot look) and presented on a waist-height plinth, perhaps even submissive.

Location: 5th floor reception

Guide price: £1,500

Royal College of Art, MA Print

Purchasing Work

**The majority of the artwork from this year's collection
is available for purchase via a silent auction.**

Details of the guide price for all artworks are featured in this
catalogue (the works are offered subject to reserves).

Each student will receive the full amount from the buyer –
we will not charge a commission fee.

If you are interested in purchasing any of the artworks,
please contact: chris.edwards@traverssmith.com

Art Committee

The Travers Smith CSR Art Committee, which selected this year's works, is composed of people from across the firm, each bringing their own tastes, views and experiences.

New members are invited to join the committee each year, to ensure that the artworks which are on show remain lively and diverse.



Daniel Gerring
PARTNER



Paul Stannard
PARTNER



Lucie Cawood
PARTNER



Rachel Wevill
PROFESSIONAL
SUPPORT LAWYER



Alyssa Braithwaite
ASSOCIATE



Laura Spota
ASSOCIATE



Bix Gould
TRAINEE SOLICITOR



James Ravden
TRAINEE SOLICITOR



John Franssen
HEAD OF RESEARCH



Sasha Radoja
HEAD OF
COMMUNICATIONS



Chris Edwards
CSR & DIVERSITY
MANAGER

The Artists: University of Westminster



Hatice Atas



Nathan Baumber



Liz Benjamin



Solina Guédroïtz



Bethany Hill



Elsie Kibue-Ngare



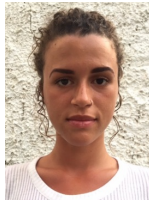
Katie Christian



Luanna Flammia



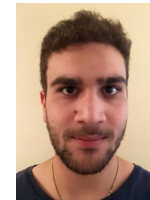
Louis Flothmann



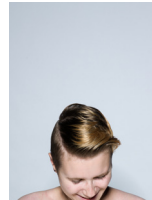
Grace Flynn



Harry Martin



Nico Virides



Mary Woolf

The Artists: Royal College of Art



Soo Min Ahn



Paula Baader



Augustine Carr



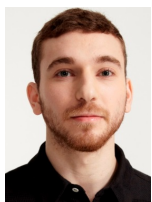
Tom Hatton



Sunyoung Hwang



Insun Jang



Jake Garfield



Olga Grotova



Georgia Harris



Julia Parkinson



Sang-Mi Rha



Kyle Zeto

Final word: University of Westminster

For the second year running, Travers Smith has partnered with the Westminster School of Media Arts and Design (WSMAD) in an innovative Art Programme for emerging visual artists.

This initiative offers our graduating students a generous opportunity to transition into professional life as artists. Selected work is displayed within the prestigious premises of Travers Smith in central London and receives additional public exposure through this publication. As part of this project, the participating students are given pro bono legal advice, along with business support, by members of this internationally established law firm in assisting them in setting up their creative careers after art school.

Students and staff of WSMAD, who have taken part in this year's scheme, have immensely enjoyed engaging with the Travers Smith team and everyone is excited about the upcoming exhibition of the selected work. The graduates also very much appreciate the opportunity to sell their work through a silent auction. The Westminster School of Media, Arts and Design feels privileged to have been chosen to participate in this Programme and is looking forward to a continued partnership over the coming years.



Prof. Kerstin Mey
Pro Vice Chancellor and Dean
Westminster School of Media, Arts
and Design, University of Westminster

UNIVERSITY OF
WESTMINSTER

Final word: Royal College of Art

We are grateful to Travers Smith for so generously facilitating this opportunity for our students and look forward to an ongoing and rewarding relationship with the firm, its clients and associates.

The Royal College of Art (RCA) is the world's number one ranked university of Art and Design, and houses the world's most significant concentration of post-graduate Fine Art students, researchers and academics. We are a community of experts, from diverse creative, intellectual and cultural perspectives, engaged in the pursuit of creative interests in an environment that is a crucible of enquiry and debate.

Within the increasingly challenging funding environment for the arts and education, we are committed to do all we can to support our students

as they study with us and beyond their graduation. This involves us actively seeking investment to support the infrastructural growth of the RCA, which is essential in order for us to remain at the forefront of new artistic thinking, practice and process.

We are also engaged in sourcing fee bursaries for students and warmly welcome other schemes, such as this one offered by Travers Smith, to facilitate our students' transition to professional careers through the exposure of their work to new audiences, as well as the provision of invaluable pro bono legal advice.



Prof. Juan Cruz
Dean of Fine Art
Royal College of Art


Royal College of Art
Postgraduate Art & Design



Travers Smith LLP 10 Snow Hill, London EC1A 2AL

T: +44 (0) 20 7295 3000 | *www.traverssmith.com*